

Facility

2021-05-19

- [Department Shared Instrument](#)
- [□□□□□□□□□□](#)
- [□□□□□□□□](#)
- [□□□□□□□□□□](#)
- [Sample and Material](#)

EPS Department Shared Instrument

About EPS Department Shared Instrument

EPS Department maintains instrument such as analytical devices with especially high commonality. As of April 2014, we possess following 9 devices (detailed descriptions are given under each item). Contact the manager of respective device for details.

Eligibility for Use

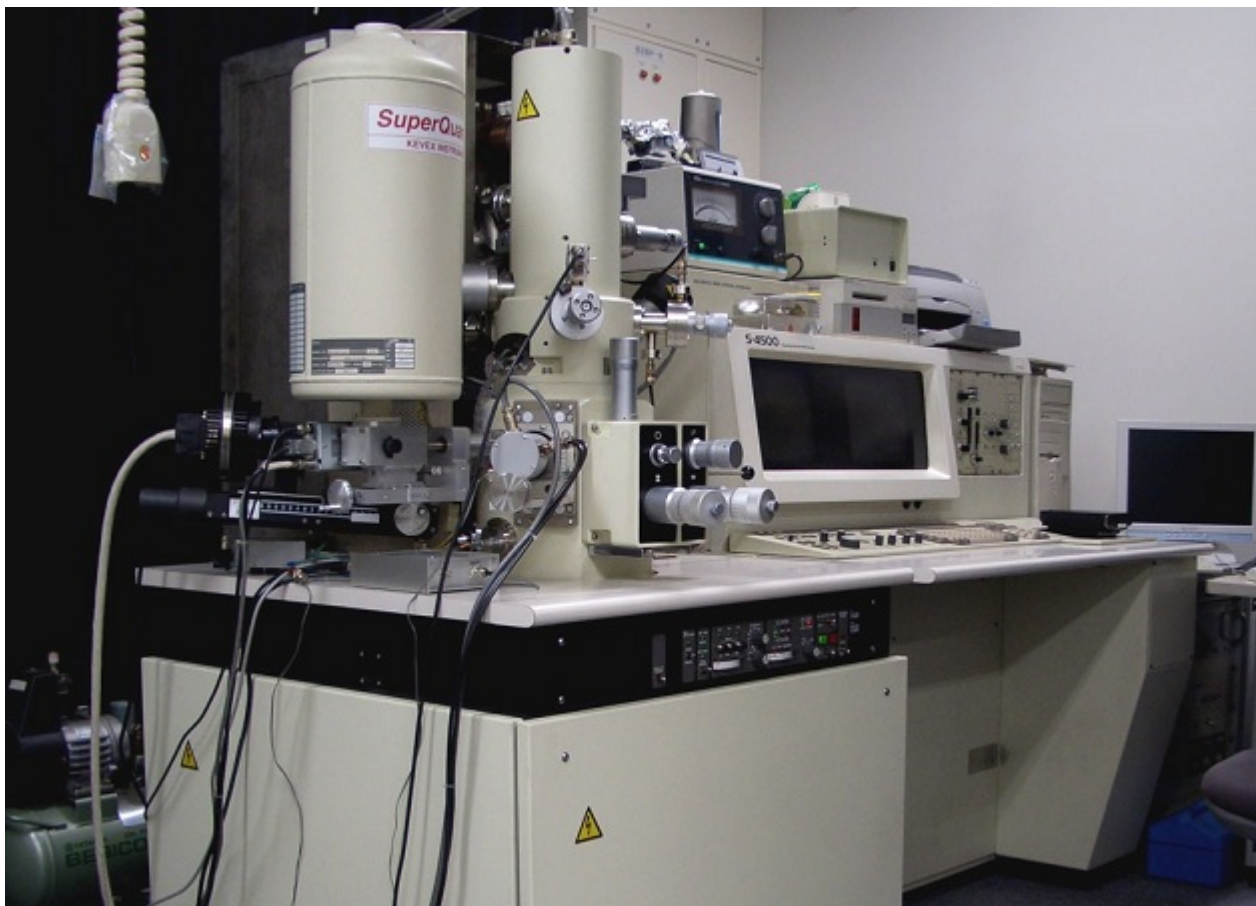
Any student (including both undergraduate courses), faculty members and researchers belonging EPS Department are eligible for using the following devices, but be reminded a certain level of training is needed for self-use (with some exceptions). Students, faculty members and researchers of other department can also be eligible for instrument use, but contact instrument managers for details.

Cost for Use

Fee is incurred on either individuals or laboratory for using EPS Department shared equipment and requesting managers for operation. If students and researchers are to use shared equipment, ensure that they consult with faculty of each laboratory. Contact equipment managers for fee or cost of

10 (1) (2) (3) BSE (4) X EDS (5) EBSD (6) FSE

Manager: Koji Ichimura Tel: 24557 Tel: 24557
ichimura[@]eps.s.u-tokyo.ac.jp



Analytical Field Emission-Scanning Electron Microscope (FE-SEM)

Instrument # 4

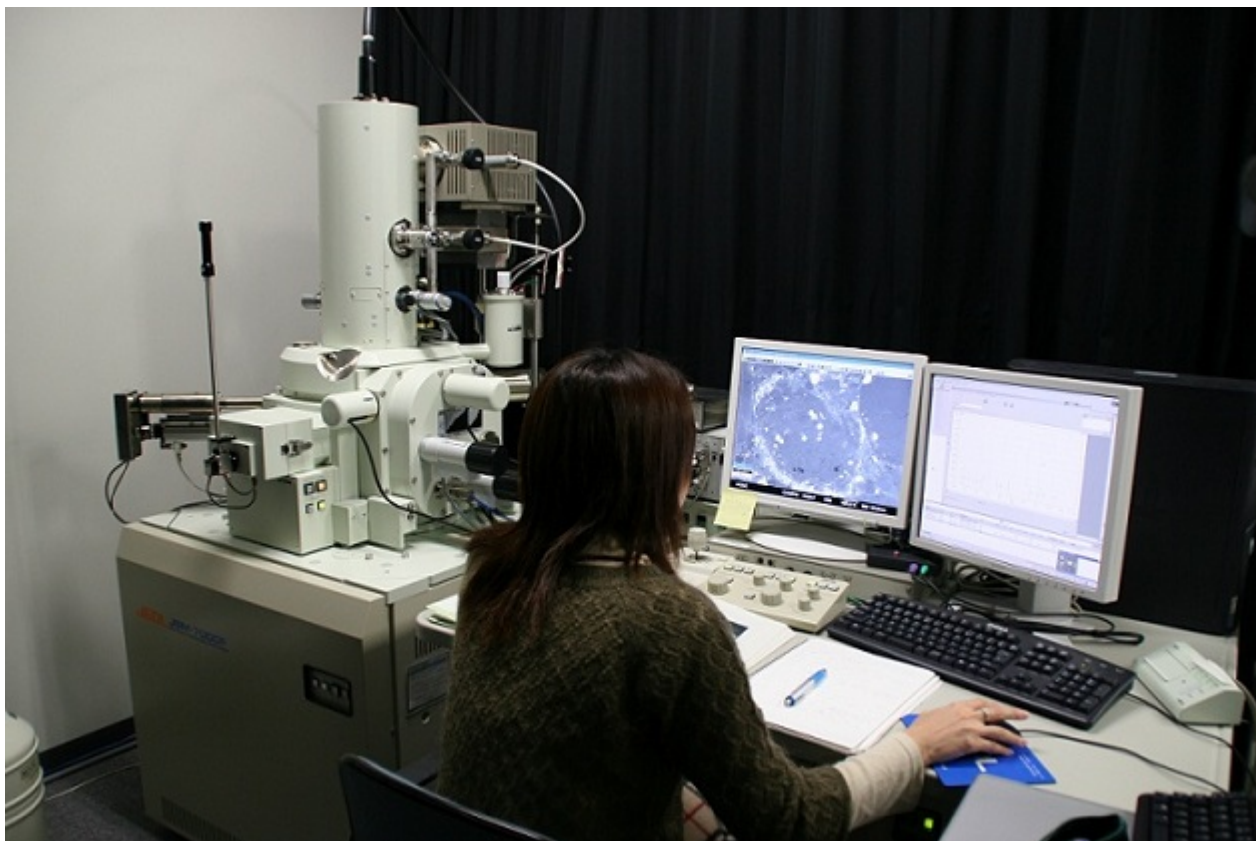
Instrument: Field Emission-Scanning Electron Microscope, JEOL JSM-7000F

Location: "Scanning Electron Microscope Room", B238, Central Bldg., Faculty of Science Bldg.1

Principle and Features: 2 10

2005年4月、東京大学工学部材料科学科にて、
EPMA (Electron Probe Micro Analyzer) の導入が完了し、
現在、本装置を用いた分析が開始されています。

Manager: Hideto Yoshida Tel: 24528 yoshida[@]eps.s.u-
tokyo.ac.jp



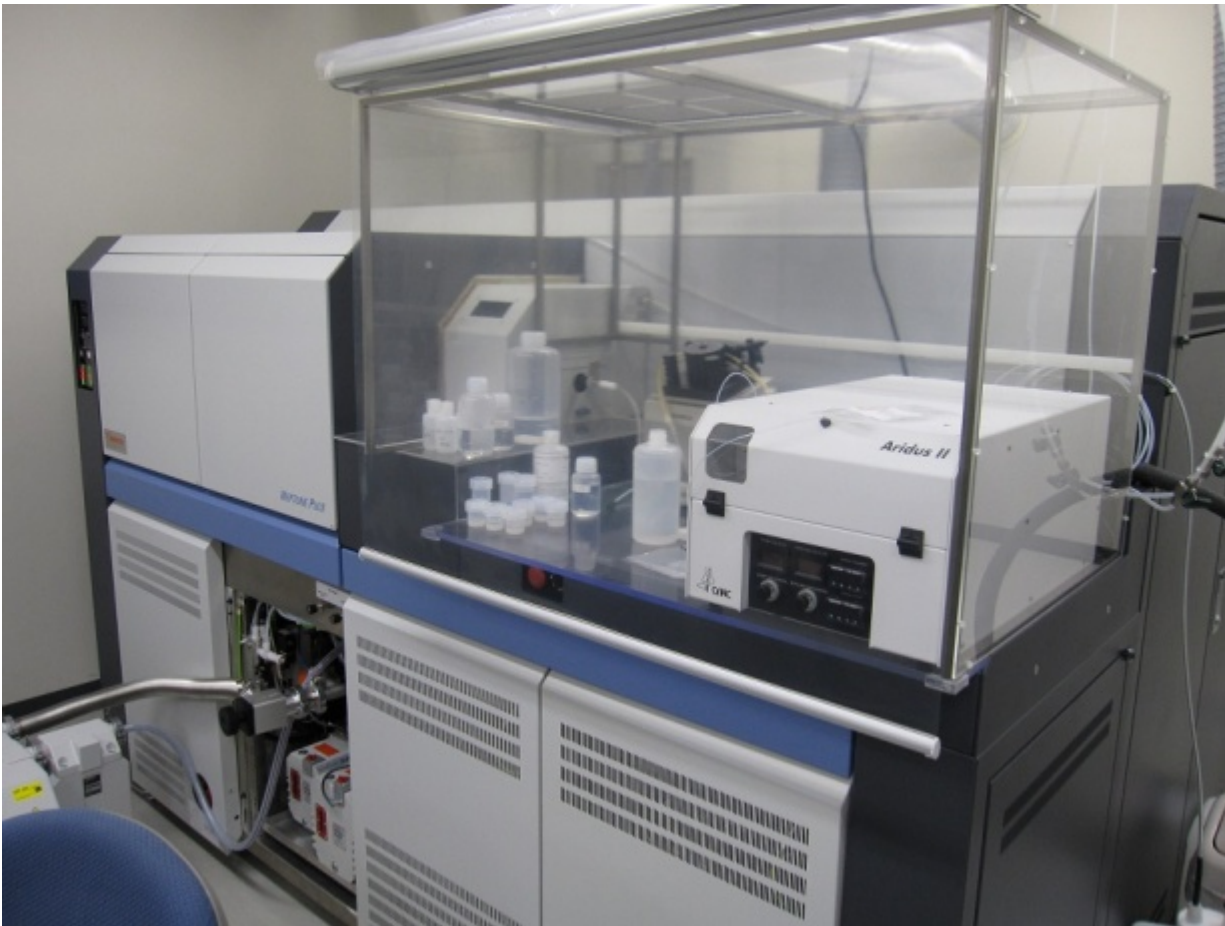
Electron Probe Micro Analyzer (EPMA)

Instrument # 5

Equipment Name: EPMA (Electron Probe Micro Analyzer), JEOL
JXA-8900L

Location: "EPMA Analysis Room", B136, Central Bldg., Faculty
of Science Bldg.1

Principle and Features: 1. 高真空環境下で、電子線を照射し、
試料からX線を発生させ、その強度を測定することで、
試料の元素組成を分析します。また、WDS (Wave Length
Dispersive Spectroscopy) と EDS (Energy Dispersive
Spectroscopy) の両方を搭載しており、高精度の
元素分析が可能です。



Sample and Material

Sample and Material of Geography

Sample and material related to geography such as maps, aerial photographs are kept in the museum geography sample and material room. EPS students and faculty members have an access to domestic general map, domestic thematic map, aerial photographs, etc., with exceptions of some valuable antique maps, geological samples, coral samples and folkloristic samples.

INO's Map ("Chuzu") Restoration Project

With the support of the Sumitomo Foundation's cultural property maintenance and restoration project, EPS Department has conducted the INO's Map (7 maps) restoration

project over 4 years from Fiscal Year 2015 (2015: Eastern and Western Hokkaido, 2016: Tohoku and Chubu, 2017: Chugoku and Shikoku, 2018: Northern and Southern Kyushu).

[→ Report on INO's Map Restoration Project](#)

□Transfer of INO's Map (Feb. 19, 2018)

□ □□□□□□□□□□Feb. 19, 2018

Transfer of Material

□On January 31, 2018, following material was officially transferred to the Department of Earth and Planetary Science from the University Museum, the University of Tokyo.

□□□□ (INO's Map "Chuzu")